

Instructions for Upgrading to Version 8.2.7.8 of the Weatherization Assistant

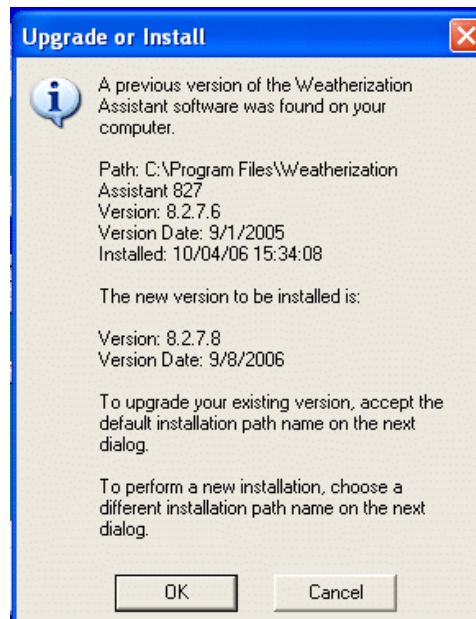
November 3, 2006

Version 8.2.7.8 of the Weatherization Assistant (WA), released September 8, 2006, is an update to the former Version 8.2.7.6. Installation of the upgrade is meant only to replace some of the program elements of the former version, but not affect your existing data or the way you use the program. Only in rare instances would re-running a job with the newer version give any different results than were obtained from the former version.

If this is your first installation of the WA program Version 8, follow the instructions given in “WA8278 Installation Instructions.pdf.” If you had previously installed Version 8.2.7.6, follow one of the two upgrade procedures below.

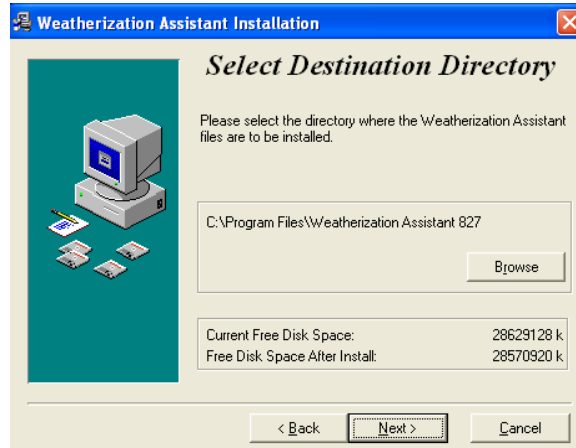
Standard Upgrade Installation

Since you are upgrading from Version 8.2.7.6 to 8.2.7.8, during the installation of the latter you will be presented with the notice:



If, in the former installation of Version 8.2.7.6, you had selected the default installation location on your computer, the “Path” “C:\Program Files\Weatherization Assistant 827” will be shown, as seen above. If you had selected a location on your computer other than this default, the “Path” in the form above would display this location instead.

Selecting “OK” will continue the installation process, while choosing the “Cancel” button will abort the effort. If you have chosen to continue, you will be presented with the following form:



As in the previous form displayed, the default path will be shown if you used the default installation location in the previous installation of Version 8.2.7.6, or a custom path will be shown if you selected a location on your computer other than the default.

The WA stores all data you enter into a database file (i.e., an “mdb” file) on your computer. The default name for this file is “wa827.mdb.” If, during your use of Version 8.2.7.6, you have taken no actions to create other databases with other file names and link to them (see “The Weatherization Assistant Users Manual for Administrative Features (Version 8),” pg 175), selecting the “Next” button on the above form and the succeeding “Ready to Install!” form will upgrade your 8.2.7.6 program to Version 8.2.7.8, replacing the appropriate components of the program and retaining all links to client data you previously had.

If you have created and linked to database files other than the default “wa827.mdb,” the above installation procedure will still automatically link the upgraded WA program to the default file, “wa827.mdb.” In order to reference data in other database files following this upgrade, you will need to use the “Data Link” feature of the program to re-link the program to one of the other files that you had created (see pg 175 in the reference above). Once you have linked the program to another database file, it will retain that link in subsequent uses of the program.

If no database file having the default name “wa827.mdb” exists in the location you have installed the program, the upgrade procedure will create a new default database file named “wa827.mdb” and link to it.

Custom Installation of Version 8.2.7.8

Although it is not recommended, you may install Version 8.2.7.8 in a totally separate location than a former installation of Version 8.2.7.6. This retains both versions on your computer. To do this, initiate the upgrade by executing wa8278.exe. When presented with the “Select Destination Directory” form, choose the “Browse” button and select a new location from the resulting Windows directory selection form.

Some special considerations apply if this approach is chosen. It is recommended that this be performed by an individual well acquainted with computer file structure and file handling capabilities (e.g., Windows Explorer). The following are some factors to consider for such an approach:

- Standard installation of Version 8.2.7.6 creates an icon on the computer’s desktop named “Weatherization Assistant 827.” Before installing Version 8.2.7.8 with the intent of retaining the former version, this icon name should be changed, possibly to reflect that it opens specifically Version 8.2.7.6. If this is not done, installation of Version 8.2.7.8 will use the same icon and the ability to open the former version from a desktop icon will be lost.
- If Version 8.2.7.6 was installed into the default location (“C:\Program Files\Weatherization Assistant 827”) and Version 8.2.7.8 is installed in a different location, the new installation will automatically link to the “wa827.mdb” file in the default location of the former version. The installation will create a new blank “wa827.mdb” file in the new location, but it would have to be accessed by linking to it using the “Data Link” feature of WA.
- If Version 8.2.7.6 was installed into a location other than the default location, and Version 8.2.7.8 is installed into yet another location, the new installation will automatically create a new “wa827.mdb” file in the new location and link to it. Access to data in the former data base file would require using the “Data Link” feature of WA to link to it.
- Installing WA in locations other than the default locations may also not allow the program to automatically link to the upgraded report file. The report file for Version 8.2.7.8 includes an additional report which prints all of the measures’ costs. If, after upgrading, the Setup Library Information tab under the Setup Library Main Menu Item does not include a report block in the lower right corner, use the Browse button in the “Currently Linked REPORTING File” block under the Data Link Main Menu Item to locate the “waReport.mde” file in the location where you installed Version 8.2.7.8. Then, use the Link button to link to it.
- Database files can be moved to different locations on your computer. Use the Data Link feature of WA to link the program to their new locations.

Geological Information System (GIS) Data

With the release of Version 8.2.7.8, the mapping data supplied by the Geological Information System has been updated. However, both the original data and the updated data are compatible with both versions 8.2.7.6 and 8.2.7.8 of the Weatherization Assistant. Therefore, updating WA does not require you to update the GIS data. In fact, there is no guarantee that the mapping data in the two data sets differs for any given geographic location

If you do wish to update the mapping data, delete or move the existing data in your GIS folder under the location where you have installed WA. Then download the new data from the WAPTAC web site using the instructions provided at the site. No additional modifications need to be made.